

ELLE DECORATION

MARCH 2025

BEAUTY &
BRUTALISM:
THE NEW
INTERIORS
DIRECTION

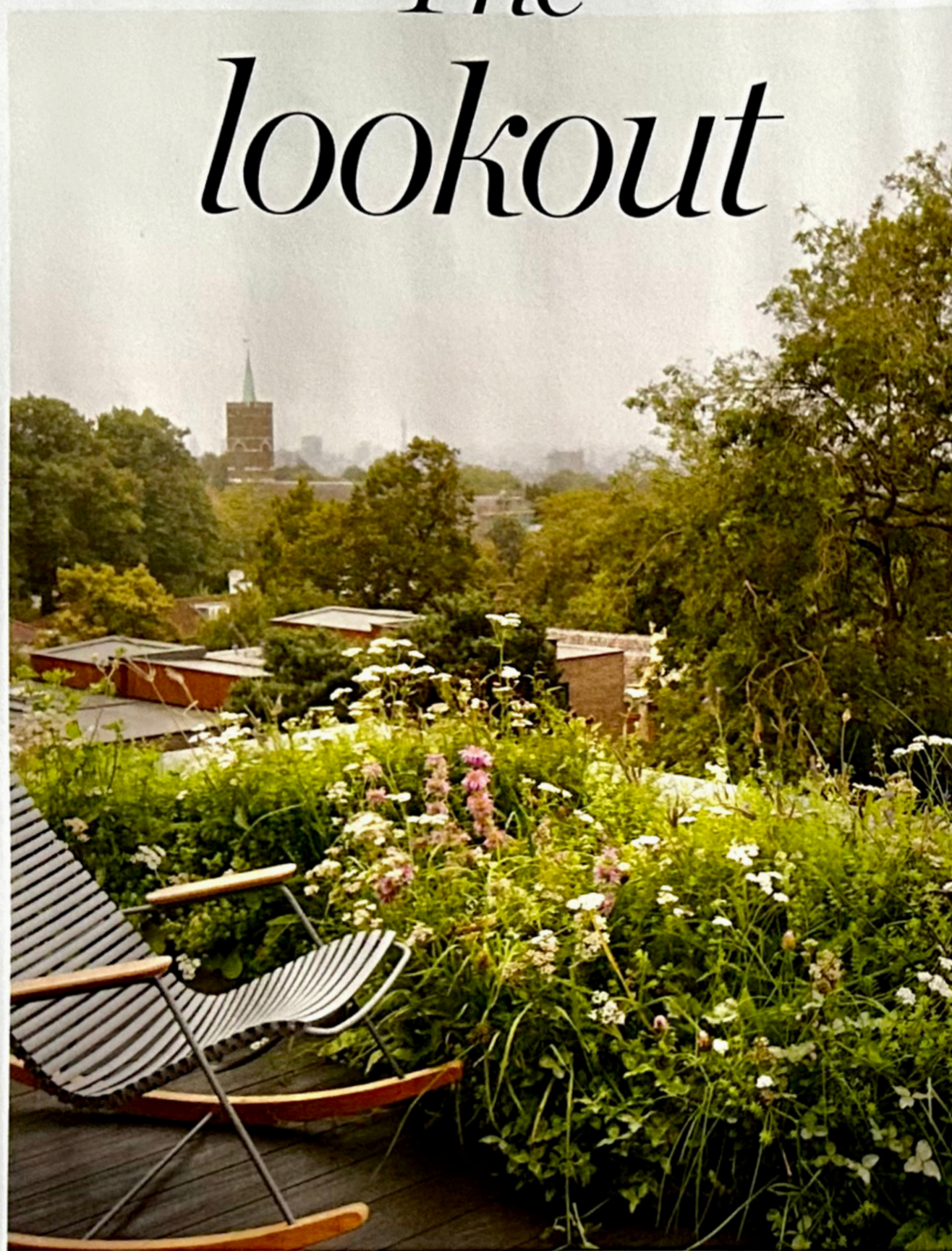
STYLISH STORAGE
TO CONQUER CHAOS

THE SURPRISING
BATHROOM COMEBACK

PLUS ARMANI AT 90,
THE SERPENTINE PAVILION,
FARROW & BALL'S
LATEST SHADES



The lookout



Working in a uniquely collaborative way, interior-design studio Zulufish created a home that builds towards views across a leafy London skyline

WORDS **PHOEBE FRANGOUL** PHOTOGRAPHY **BEN ANDERS**
STYLING **AMY HEFFERNAN**

Exterior Royal Design's 'Click' rocking chair is positioned to take in this 1960s terraced house's views of a quiet conservation area. All the planting was designed by Liz Seymour and the decking is from Saige
Study Raft's 'Rowland' chair in black teak and woven leather is paired with a vintage yellow chair that the owners brought with them from their previous home. These sit on a 'Wood Grain' rug by Dharma Taylor for Christopher Farr with an 'Eco' side table from Julian Chichester and Ligne Roset's 'Cinetique' floor lamp ►





After living in their terraced 1960s house on a quiet, modernist estate in Hampstead for several years, the owners of this home were ready for a complete interior redesign. They had been following the work of Zulufish on Instagram for some time and had plenty of ideas, but needed direction. The studio's head of interior design Caroline Milns says the couple were intrigued by the idea of working collaboratively. Planning permission for a roof terrace had already been granted following a lengthy process, so the new spaces needed to connect to the outside and hold their own without diverting attention from the views. To do this, the Zulufish team decided to create a narrative using colour and materiality that gradually unfolds as you move upstairs. 'The lower floors are cocooning, contrasting with the upper areas and roof terrace, which have a sense of sunny openness,' explains Caroline. 'In the open-plan ground floor, the mix of metal and wood creates a perception of depth. It's urban but welcoming and filled with personality. As you move to the second and third floors, the materials retain that feel but change to glass, concrete and polished plaster, subtly reflecting the light.'



Some clients like to sit back and leave their designer to it, but these owners already had some lovely pieces of furniture from brands including Roche Bobois, Gubi and Ligne Roset, as well as an impressive collection of modern art, which Caroline aimed to complement with a scheme she describes as 'edgy, with nothing pretty, pristine or uniform'.

'It was wonderful to work collaboratively on this project, one that felt very unique to its sense of place and the age of the property,' adds Caroline. 'I think we all felt a shared joy in the result as it didn't feel as though we had introduced this interior; rather, it was something we uncovered.' zulufish.co.uk

Terrace Two lanterns from Nordium Design in Harrogate stand on the terrace outside the study. The 'Vision' balustrades are by Inspired Architectural Solutions and the planters are from Torc Pots and Christian Day. The irrigation system is by Hunter and the sound system is from Sonance.

Portrait Caroline Milns, the head of interior design at Zulufish.

Stairs The original wood balustrade was reimaged in glass, creating a feeling of weightlessness and a seamless flow of light from the roof terrace above ➤



Living room The flow from the kitchen and dining area to this space is punctuated by a bespoke Modus fireplace that acts as a focal point, creating cosiness within the open-plan layout. The L-shaped sofa is from Roche Bobois and the 'Pacha' lounge chair is by Pierre Paulin for Gubi. In the centre of the space stands a Cattelan Italia 'Yo-Yo Brushed' coffee table, which holds glass pieces from LSA and a bowl from Nordic Nest. The lamp in the corner is from Porta Romana and the rug is by Holmes Bespoke. In the window stands a piece bought from Moncrieff-Bray Gallery. The walls and ceiling are finished with sheets of Corten Steel and Iron Corten >



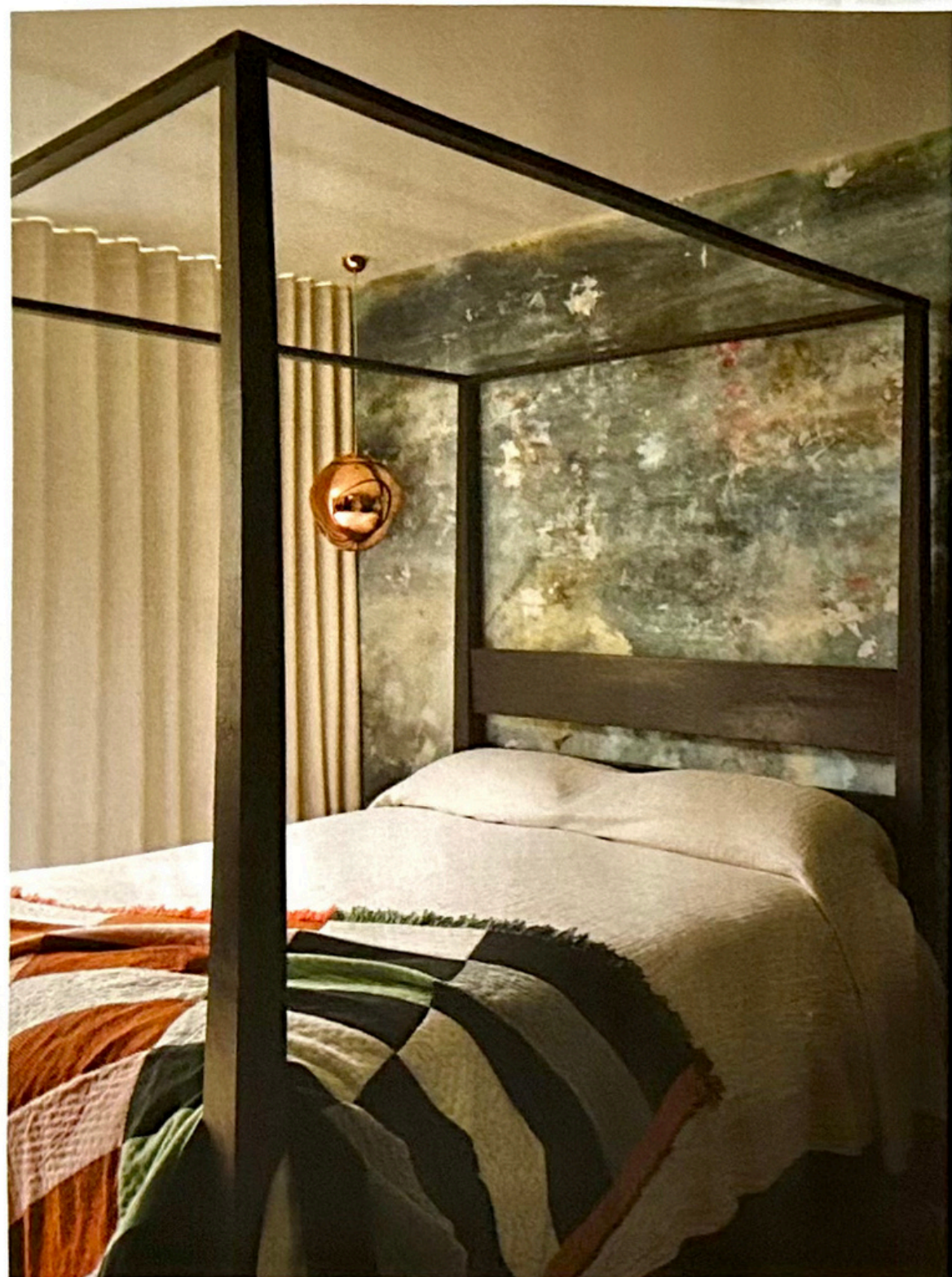
'The mix of metal and wood creates a sense of depth. It's urban but welcoming and filled with personality'



Dining room This area has a slightly lower ceiling, and the obvious direction would have been to keep it light and bright. However, Caroline took a more dynamic approach, wrapping walls and ceiling in a rust-coloured Corten Steel to create a dramatic space that is balanced by the large expanses of glass at the windows. The extendable Mobili Fiver 'Emma' dining table is illuminated by a sculptural 'Wave' pendant from Heal's. The 'Sala' dining chairs by Pascal Mourgue and Pierre Paulin's 'Gavrinis' rug are from Ligne Roset

Powder room 'Night Garden' wallpaper from Happy Wall makes a bold statement in this compact space. For a similar basin, try Ripples

Kitchen The cupboards are clad in high-quality Italian XyloClear, a durable premium laminate with a distinctive textural finish. The jug is from Nordic Nest, the aluminium dish is from Ligne Roset and the 'Orb' grinders are by Gareth Neal for Case ➤



Guest bedroom An original artwork by American abstract artist Kiki Slaughter has been adapted by Feather into the 'Oh La La' wall mural that makes a statement behind the Lombok bed. Beside it hangs a Tom Dixon 'Melt' pendant. The bed is dressed with linen from Bedfolk and a blanket from Granite + Smoke

Bathroom Everything in this striking pared-back space was supplied by TBK Design

Main bedroom A bespoke bed is dressed in bedding from Caravane with a wool blanket by Hay and cushions from Holmes Bespoke, all in deep tones of rust, amber and ochre that speak to the treescape outside the window. The pendant lights are from Tala

See Stockists page for details [12](#)

'The lower floors are cocooning, contrasting with the upper areas and roof terrace, which have a sense of sunny openness'

