

THE HOME OF GREAT IDEAS FOR 100+ YEARS

Ideal Home

Space to breathe

GIVE YOUR HOME
A MOOD-BOOSTING
STYLE REFRESH

CHARLIE LUXTON
HOME DESIGN
FOR MULTI-GEN
LIVING

WIN
£1,000!
Reader home
awards
2023

14
WEEKEND
DECORATING
PROJECTS

+
6 GENIUS
USES FOR
A BUDGET
IKEA SPICE
RACK

**Chic &
sorted**

FREE YOURSELF
FROM WARDROBE
CLUTTER

YOUR HOUSE MANUAL

- ◆ SMART AIR PURIFIERS
- ◆ SAVE MONEY ON GROCERIES
- ◆ CLEVER STAIN REMOVERS
- ◆ HOME INSURANCE

**Personal
shopper**

IDEAL VS
GREAT DEAL
20 UNDER £20
OUTDOOR
FURNITURE GUIDE
BEST PIZZA OVENS



CREATE A MORE SUSTAINABLE HOME

- ◆ STYLISH ECO-FRIENDLY REAL HOMES ◆ EASY UPDATES
- ◆ GREEN GARDEN SOLUTIONS ◆ EXPERT NEWS & VIEWS



PROJECT DETAILS

WHO LIVES HERE?

Kirti and Viral Mehta with their three children, aged three, one and newborn.

THE PROJECT

Updating and reworking the family bathroom in a four-bed Victorian end-of-terrace house in west London

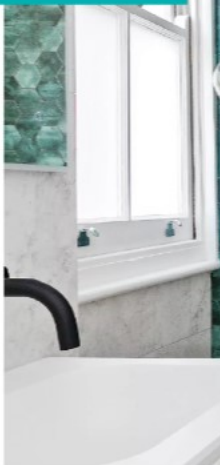
TOTAL COST

£20,000

BATHROOM PROJECT

Wow factor

WITH A CLEVER REJIG OF THE LAYOUT AND EYE-CATCHING KEY PIECES, KIRTI AND VIRAL MEHTA HAVE CREATED A STUNNING YET PRACTICAL FAMILY SPACE



BEFORE



LAYERED LIGHTING

Ceiling spotlights offer plenty of practical light, while pendants create a softer ambience, perfect for when relaxing in the bath

'We had a copper bath where we stayed on our honeymoon. Since then it has been on our wish list!'

Copper Boat bath, £4,894, BC Designs. Nebula hexagon basalt tiles in Green, £154.95/sq m, Fired Earth. Sleek Edison pendant lights in Copper, £35 each, Industville

THE PROBLEM

The original bathroom was larger but it felt cramped and outdated

THE SOLUTION

'Before we moved in, the bathroom hadn't been touched for 15 years. There was a diagonal wall at one end, creating an awkward angle, which wasted the floor space, and the shower and bath were cramped together,

making it difficult to move around. It needed redoing and we wanted colour and personality to fill the room – a wow moment when you walk in. We worked with Zulufish (zulufish.co.uk) on the design – they helped us understand what was achievable within our budget. They suggested

changing the diagonal wall to a right angle, which created space for a freestanding bath. The shower was moved to the other end of the room, where we could have a bigger one – perfect for the children! The new layout allowed us to bring in all the design details we love.'





ABOVE 'A wall-hung unit increases the sense of space, and the large drawer below the basin is handy for storage'

Exalt: wall/floor porcelain tiles, price on request, Domus. Faerber Mode 60 basin unit, £378; Faerber Infinite M1 Pearl basin, £554.59; Faerber Edge 1200 LED cabinet, £1,017.40, all Bathrooms by Design

RIGHT 'We love the steel-framed shower doors, a style which features elsewhere in our home, plus the matching sleek black shower fitting and taps'

Exalt: mosaic tiles, price on request, Domus. Vos Shower in Matt Black 1, £1,124, Just Taps. Shower door, View 05, price on request, The Shower Lab

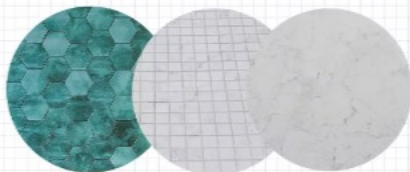


**RECESSED
ALCOVES**
Perfect for
storage; the one
by the bath can be
used for candles

“When ordering the shower door we didn't take into account the change in measurement when the tiles were laid, a few millimetres make a big difference!”

KIRTI MEHTA, HOMEOWNER

KEY SURFACES



LEFT TO RIGHT Feature wall tiles Nebula hexagon basalt tiles in Green, £154.95sq m, Fired Earth (firedearth.com). Wall, floor and mosaic tiles in DCEA on price on request, Domus. **Shower floor tiles** Exalt porcelain tiles in DCEA on price on request, Domus. **Wall tiles** Exalt porcelain tiles in DCEA on price on request, Domus

BATHROOM SOURCEBOOK

Bath, BC Designs (bcdesigns.co.uk). Feature tiles, Fired Earth (firedearth.com). Wall, floor and mosaic tiles, Domus (domusgroup.com). Basin unit, basin and wall cabinet, Bathrooms by Design (bathroomsbydesign.com). Taps and shower fittings, Just Taps (itpuk.co.uk). Shower door and panels, The Shower Lab (theshowerlab.com). Pendant lights, Industville (industville.co.uk). Bathroom design, Zulufish (zulufish.co.uk)